



## SCAR TREATMENT

---

THERAPEUTIC SKIN CARE EXPERTISE



The skin treatment of scars requires a specific approach to

- **Activate the skin regeneration process**
- **Soothe and calm irritated skin**
- **Adjust Daily Care**

NAQI® developed a range of lotions for scar treatment. Scar lotions are an alternative to invasive procedures used to remove scars. A topical scar lotion, formulated with specifically selected active ingredients, can make a dramatic improvement in the appearance of scars.

NAQI® works together with a manufacturer of pressure garments supplying specialised products. Certain products ease the process of putting on pressure garments and reduce itching. Other products ensure special cleaning of clothes.



Non-Aesthetic scar in the corner of the eye



Before treatment



3 months after treatment

Hyperpigmentation and hypertrophic scars of the cheek

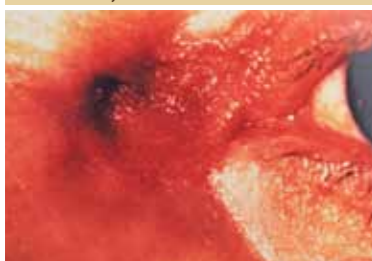


Before treatment



6 months after treatment

Scar under the eyelid



Before treatment



4 month after treatment

Source: Valladeres Jose, Palma Mercedes, Sandoval Carmen, Carvajal Fabiola, University of Concepcion (CL), Preparation of tissue regenerating creams using ros hips oil.

# NAQI<sup>®</sup>

## SKIN OPTIMISING OIL

### TREATMENT OF SCARS

#### Activates the skin regeneration proces

#### Objectives

After a wound is closed, the skin is not yet completely healed. The fragile new skin is extremely sensitive. To strengthen the new skin and reduce or avoid scarring and discoloration an intensive activation of the skin regeneration process is required. Specialized skin care is necessary.

#### Solution

NAQI<sup>®</sup> Skin Optimising Oil is formulated for an support and protection The special formulation repairs and reduces older and new scarring, and other skin problems such as acne scars, stretch marks, reduces discoloration and wrinkles. NAQI<sup>®</sup> Skin Optimising Oil is based on the regenerating effects of natural oils and

- Optimises the barrier function
- Promotes skin regeneration
- Improves the elasticity of the skin
- Improves the appearance of scars
- Increases the moisture content of the skin
- Reduces flaking
- Optimises the quality of primary care

#### Use

Gently apply NAQI<sup>®</sup> Skin Optimising Oil 2 to 3 times/day. To increase the efficiency of this treatment see the NAQI<sup>®</sup> Scar Massage and Micro-mobilisation techniques.

#### Packaging

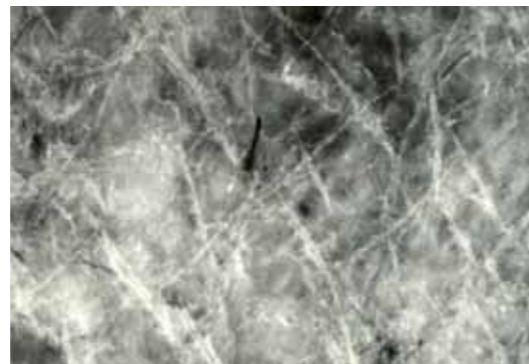
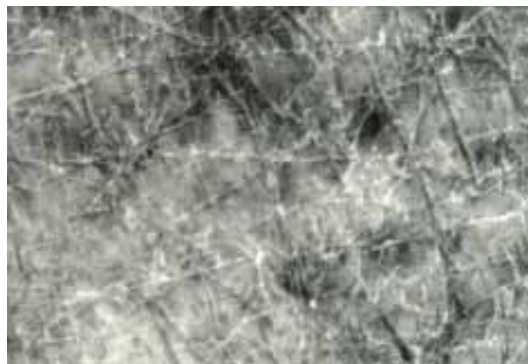
30ml



Visioscan pictures : the specular light reflectance due to scaliness is markedly improved following Cica applications. By contrast, no improvement is seen on control sites which illustrates a higher suppleness and an improved barrier compared with the control group without using the NAQI® Cica.

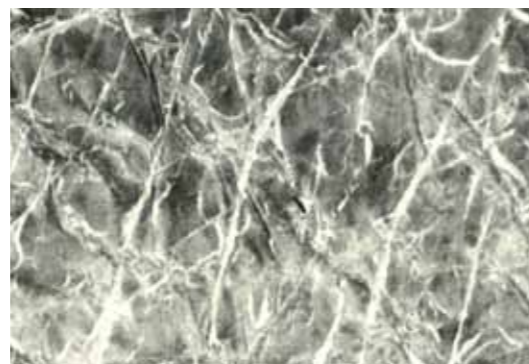
1. Initiation with CICA

2. After 4 weeks with CICA



3. Initiation Control

4. After 4 weeks Control



Source: Gérald E.Piérard, Claudine Franchimont, Interindividual comparative study between NAQI Sense Cream and NAQI Cica Cream on partial thickness thermal burns, Study 040313, University Hospital of Liège, Laboratory of Bioengineering and Imaging, University of Liège, Liège Belgium, 2013.

# NAQI®

## CICA CREAM - CICA GEL

### DAILY CARE OF BURNED SKIN

#### Objectives

After a wound closure the regeneration of the skin is a long way from being complete. The fragile, new skin is very sensitive and needs specialized nourishment and care to repair the barrier function and reduce scarring, skin discoloration and itching. This healing process may take up to a year. Appropriate on-going skin care is recommended.

#### Solution NAQI® Cica Cream – NAQI® Cica Gel :

- Improve the appearance of the scars, the barrier function and the skin elasticity. See illustrated figures below beside.
- Facilitate functional rehabilitation
- Facilitate the process of putting on pressure garments
- Omega 3 and 6 Fatty Acids (Seabuckthorn and Camelina Sativa Seed Oil) stimulate the skin regeneration
- Palmitoleic acid Omega 7 Fatty Acid accelerates cell rejuvenation,
- improves the healing process and prevents deterioration of the cell membranes.
- Opuntia Ficus-Indica Stem Extract and Bisabolol prevent and reduce irritations and itching
- The liquid crystal structure rebuilds and restructures the natural skin barrier
- Hippophae Rhamnoides Barrier Extract hydrates and smoothens regenerated skin

#### Use

- Gently apply NAQI® Cica at least twice a day.
- The skin requirements may vary throughout the year: in the winter a more intense nourishing is required by using the NAQI® CICA Cream. In the summer the NAQI® CICA Gel is advised because it gives a lighter feel.
- To increase the efficiency of the treatment see the NAQI® Scar Massage and Micro-mobilisation techniques

#### Packaging

100ml





# NAQI®

## SILICON TOUCH GEL

TREATMENT OF SCARS  
Activates the skin regeneration proces

### Objectives

- Physical barrier function
- An occlusive treatment for small scars which decreases the Transepidermal Water Loss and improves the appearance and discoloration of scars.
- Comfortable and easier to use than the traditional silicone gel sheets.

### Solution NAQI® Silicon Touch Gel

- Leaves a non-greasy and invisible protective film on the skin
- Reduces small scars (less than 5 cm long) illustrated in the literature below
- Reduces discoloration associated with scars
- Ideal for facial scar treatment and small post surgical/linear scars
- May be used under cosmetics
- Indicated in the management of keloid and hypertrophic scars

### Use

- Apply 3-4 times /day on the newly epithelialized wound

### Packaging

15ml



## ITCHING - REDNESS - NEUROCOSMETICS

Skin innervation is extremely dense and reaches the most superficial layers of the epidermis. The relationship between the skin and the nervous system has been underestimated for a long time. Recent surveys confirm the anatomical and physiological relationship between nerve cells and skin cells.

Neurotransmitters are the mediators transmitting information between the skin and the nervous system. Neurotransmitters are synthesized by the nerve endings, but the cells of the skin itself and the immune system are also able to produce neurotransmitters. All cutaneous and immune cells have specific receptors for these neurotransmitters and enzymes for degrading them. All skin cells and the cells of the immune system are regulated and controlled by the nerves. At the same time the skin cells regulate neuronal activity and growth.

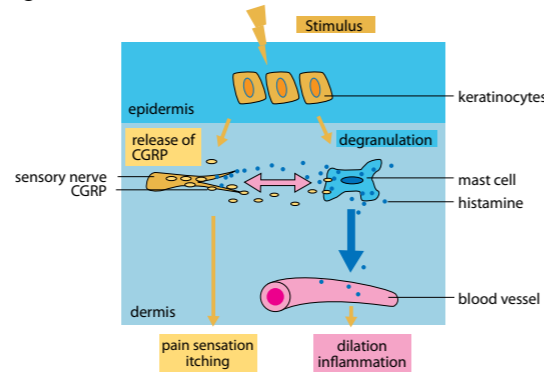
The nervous system is important for maintaining skin balance. If there are skin problems this is usually an indication that this balance is disturbed.

The great difference between nerve cells and other cells, is that nerve cells are not regenerated. Each time they are damaged therefore means that there are serious repercussions. Because they lie on the surface, they are also exposed to environmental factors such as UV rays and they need to be protected therefore. Sense R contains Glistin in order to protect the nerves of the skin.

50 % of the population has a sensitive skin, more specifically dry skin that feels taut.

Sensitive skin reacts more strongly to environmental factors. It becomes red, itches or breaks out when it comes into contact with cosmetics, plants, clothing, heat or cold, etc. Itching is caused by the

interaction between the stratum corneum, the free nerve endings and the mast cells (a type of white blood cells) when skin is irritated. Irritation of the skin leads either to a direct reaction of the nerve endings or to the activation of mast cells. Irritation of the nerves leads to a reflex reaction, pain and the release of neuropeptides through the nerve endings. These neuropeptides cause dilation of the surrounding blood vessels with inflammation and activation of mast cells. The activation of mast cells releases histamine that causes itching and ends up as a local inflammation caused by the stimulation of the nerve endings. Opuntia streptacantha, an ingredient in Sense reduces the release of neuropeptides and thus reduces irritation and itching.



## NAQI® Sense - Sense Gel

### SKIN CALMER Reduces irritation & redness

#### Objectives

A softening lotion for sensitive, red or itchy skin. Sense breaks the chain reaction of skin inflammation and itching. Protects the cutaneous nervous system against environmental factors.

#### Solution NAQI® Sense – NAQI® Sense Gel :

- Reduces itching
- Reduces localised inflammation and redness
- Reduces the reaction of sensitive skin to environmental factors
- Hydrates
- Reinforces the skin barrier function
- Softens coarse, dry skin
- Improves patient comfort

#### Use

Massage gently the NAQI® Sense twice a day.  
NAQI® Sense Gel is adapted for warm weather, with a light feeling.

#### Packaging

200ml





# BELGIAN SKIN CARE EXPERTISE

**[www.naqi.com](http://www.naqi.com)**

---

Our mission is to develop preventive and post curative skin care products and to thus contribute to the quality of the care provided and to patient satisfaction.

---

**NAQI® nv/sa - Manufacturer Dermopharma**

Stadsbeemd 1037 - B 3545 Halen (Belgium)  
+32(0)13.460.190 - fax +32(0)13.460.199 - [www.naqi.com](http://www.naqi.com)

**NAQI®™ International Ltd**

Nicholas House - River Front - Enfield, Middlesex EN1 3FG  
+44(0) 790989 8688 - [sales@naqi.com](mailto:sales@naqi.com) - [www.naqi.com](http://www.naqi.com)

**NAQI® USA LLC**

2000 Ponce de Léon Blvd - suite 600 - Coral Gables, Florida 33134  
+1 855-284-6274 & +1 305-615-0887 - [info@naqi.us](mailto:info@naqi.us) - [www.naqi.us](http://www.naqi.us)

**NAQI® Australia Pty Ltd**

Level 12, 10 Eagle Street, Brisbane, QLD 4000  
+61 405 687 043 - [info@naqi.com.au](mailto:info@naqi.com.au) - [www.naqi.com](http://www.naqi.com)